



Helpful Information for Starting School

Table of Contents

Focus	What's Covered	Page
Welcome Note		3
Meet the EYFS Team		4
Starting School	School Visit	5
School Sessions	Routine; Breakfast & After School Clubs	6
Attendance and Punctuality		7
Children's Health	Illnesses; Medical Conditions; Toileting	8
Arrival and Collection	Late Arrival / Early Collection; Safety; Emergencies	9
Settling In and Routines	Coming In; Milk & Fruit; Lunchtimes	10
Parent Partnerships	Key Person; Child Profile ; Home-School Partnership	11
Be In the Know	Contact Details; Class Dojo; School Website	12
Uniform and Clothing	Uniform; P.E Kit; Outdoor Clothing; Footwear	13 - 16
EYFS and the Curriculum	Early Years Framework; What Learning Looks Like; Reading; Writing	17, 18
Checklist for Starting School	What You'll Need	19
Message from a Reception Parent		20

If accessing this document digitally, click on the 'Focus' headings for direct access to each page.

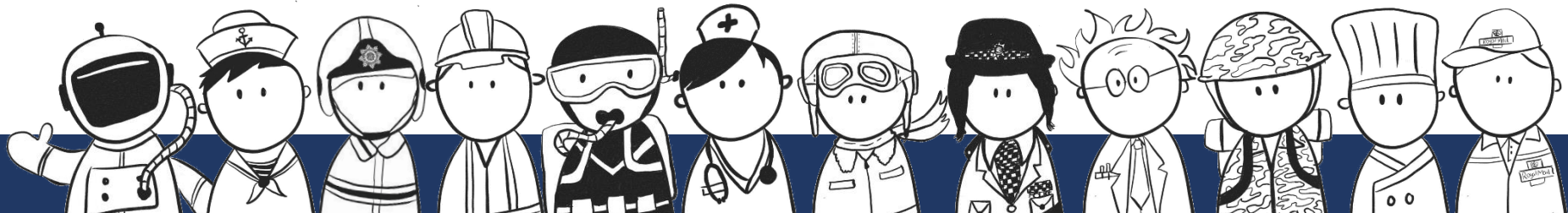


Welcome to Staining CE Reception Class

Welcome to Reception!

This booklet will provide you with some of the relevant information that you will need as your child starts Reception. We hope that it will help towards a strong start and smooth transition in September and hope to answer some of the questions you may have about your child's time in our Early Years Foundation Stage.

At Staining, we recognise that parents are children's first and most important educators. We therefore hope to establish a strong working partnership and this handbook is one of the first steps towards this.



EYFS Team

Reception Staffing

Reception Teacher: **Miss Walsh**

Reception Teaching Assistants: **Miss Judge**

Reception Lunchtime Assistant **Miss Shorrocks**

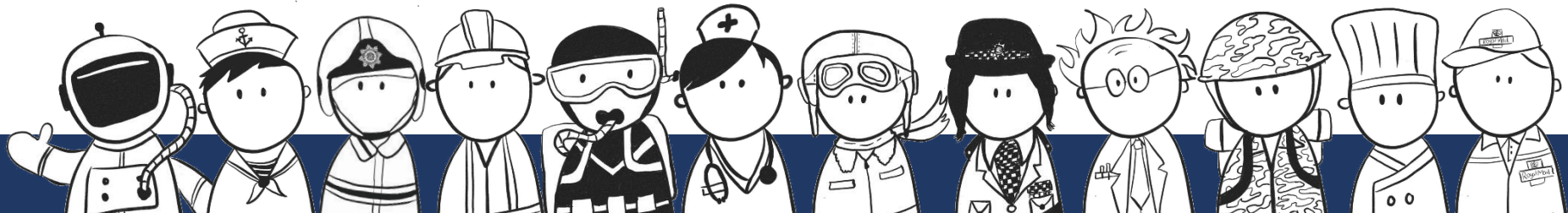
Senior Leadership

Headteacher: **Mrs Shoulders**

Deputy Headteacher: **Mr Twist**

EYFS Leader: **Mrs Nugent**

For access to a full list of school staff, please visit our [school website](#).



Starting School

Beginning school can be an exciting yet nerve-racking time for children and their families and we are here to make your child's transition a smooth and positive experience. This document will help guide you through the 'ins and outs' of the basics.

School Visit Day Wednesday 23rd June 2021

Due to government guidance, we've had to alter our plans for our induction process again this year. Instead of the evening induction meeting and transition days we originally wished to host, we will instead be welcoming you into school (one family at a time) so you can get a brief glimpse of us in action. During this visit, you'll have the opportunity to meet your child's class teacher and other members of staff including other members of our Early Years team, senior management team, office team and our school's safeguarding team.

August 31st Start

The children will start school full-time on Tuesday 31st August 2021. More information regarding this will be shared via Class Dojo in the coming weeks. If you haven't already, please install the '**Class Dojo**' app to your mobile device. Further details on how to connect to the app can be found in your child's induction pack which you will be given to you during your visit to school on Wednesday 23rd June 2021.



School Sessions

Doors Open:	8:45am
Morning Session:	9:00am – 11.45am
Reception Lunchtime:	11.45am – 12.45pm
Afternoon Session:	12.45pm – 3:00pm
Worship:	3:00pm – 3:15pm
Collection:	3:25pm

Morning Registration:	9:00am – 9:05pm
Afternoon Registration:	1:00 – 1:05pm

The children will have a 15 minute break in the morning, usually between 10:30-10:45am and a mid-afternoon break, usually around 2pm.

Breakfast Club

£3 per session.

Breakfast Club opens at 7:30am and is located in the school hall. It allows greater flexibility in when children can be 'dropped off' and is very popular with working parents.

After School Club

£6 per session.

After School Club runs from at 3:25pm – 5:30pm for anybody needing to organise a place for your child, please speak to the school office.

To book a place for either session, please download the **School Money App**. Information on how to do this will be provided in your child's induction pack.



Attendance and Punctuality

Staining Primary School encourages all pupils to achieve 100% attendance.

Outstanding:	100%
Good:	98%
Satisfactory:	94-98%
Cause for Concern:	>94%
Attendance Team	>90%



Doors open at 8:45am and close at 9:00am prompt.

It is very important that your child arrives on time each day as we begin learning activities straight away. The school gates are only opened at the beginning and end of the day, so if you are late or need to collect your child early, you will need to come to the main school entrance. If you need to make arrangements for extended care, please contact the school office.

In School, On Time, Every Day

Please be aware that holidays in term-time are not encouraged.
Details of the school term times can be found on our school website.



Children's Health

If your child is ill...

If your child is ill and needs to stay at home, please telephone the school to advise us of the situation. This must be done each day of absence. Please ensure they are **fully** recovered before they return to school to prevent the risk of spreading infection.

Please note that children with any form of sickness or diarrhoea **must** be kept at home for at least **48 hours after** the symptoms have cleared.

Medical Conditions

If your child is asthmatic and requires the use of an inhaler, please discuss this with your child's teacher. We will need an inhaler to be kept in school which should be clearly labelled with your child's name and full instructions on its use and dosage. A medical information form should be completed and signed by parents giving us all the necessary information. If your child has any other medical conditions please inform the school immediately so that a personal care plan can be agreed and put in place.

Please inform the staff if your child has any allergies or needs a special diet for medical reasons.

Toileting

We would expect your child to be fully toilet trained when they start school unless there is a medical or developmental reason, but we do understand that accidents can happen. Please let us know if this is an area of concern for your child so that we can support their needs.



Arrival and Collection

The school day starts at 9:00am and ends at 3:25pm. The school gate is opened 8:45am. A member of staff will be present to direct the children from the school gate towards their classroom.

Late Arrival / Early Collection

Pupils requiring admittance to school following registration periods must go to the main entrance and request entry via the school office. For health and safety reasons, parents MUST accompany late arriving pupils into the building in order to sign their children into school.

The school office is responsible for overseeing the procedure for releasing children where parents/carers have requested and been granted leave during the school day. If you need to collect your child early or take them out of school for an appointment, please inform the school office and collect your child from the main entrance at the time arranged with school.

Safety

For safeguarding reasons, children will only be dismissed to the people named on the Data Collection Form, unless the school has been informed in advance of any alternative arrangements. If we are ever unsure, we will not dismiss your child and will contact you immediately. Please be aware that the person collecting your child from school must be aged 16 years or over.

Emergencies

Should an emergency arise where parents are unable to collect their child, please telephone the school immediately (01253 882983) and advise staff of the arrangements that have been made for the collection of your child.



Settling In and Routines

Coming into Reception

The children will begin school full time from **Tuesday 31st August**. We know that this is a nerve-racking yet exciting time. Some pupils will skip happily in straight away and some will need a little more persuading at first. We encourage the children to say goodbye to their parents / carers at the school gate where a member of staff will be on hand. Once they enter the classroom, we promise that they settle in to the routines swiftly and nerves quickly disappear.

Milk and Snack

Your child will be entitled to receive free school milk, provided for by Cool Milk, until they turn five. In order for your child to receive milk, you will need to register online at www.coolmilk.com/register. Once your child turns five, you have the option to pay for school milk if you still wish for them to receive it – this usually costs around £14 per term.

Milk and fruit are available to children every day.

We encourage children to wash their own hands and get their own milk and snack when they feel ready. These independence skills are a very important part of your child's development.

Lunchtime

Children are able to have a school dinner, prepared in our school kitchen, or bring a packed lunch in from home. Please book your child's school meals via the **School Money App**.

As part of a government initiative all school age children under the age of 7 are entitled to a free school meal, and we hope that all children will take up this offer. However, if you think that you might be eligible for free school meals, please speak to the school office as this may entitle you to other benefits.



Parent Partnerships

Your Child's Key Person

Every child in Reception will have a Key Person. During the first couple of weeks in school, the staff in Reception Class will get to know your child and a Key Person will be identified based on whom your child forms a strong attachment to. We continually strive for the best outcomes for our pupils both academically and emotionally and our Key Person system plays a vital role in connecting and tuning in with children and families at a more personal level.

Your Child's Profile

In the Early Years, your child will have their own 'profile'. We will take lots of photographs and write observations of your child when they are playing and accessing challenges in the provision to assess their learning throughout the year. You are welcome to look at your child's profile at any time to see how they are getting on in school.

Home-School Partnership

We really value the importance of parents and carers and believe that you are the key to your child's success. You know your child better than anybody and you can really help your child to succeed. We ask that you support your child with their learning by completing daily reading activities and home learning tasks. Reading books will be sent home weekly along with home learning challenges. There may also be occasions where we send additional home learning to further support your child's development.



Be In the Know

Contact Details

Please ensure that the office always has an up to date mobile phone number and email address for you as these will be used as the main forms of sending you school newsletters and important updates.

ClassDojo

ClassDojo is an App that enables you to see what your child is doing through the 'Class Story' feature. The Class Story will be updated regularly and will include key memos, events and photographs.

Messaging is another integral part of ClassDojo and parents and teachers can communicate with each other very easily on matters pertaining to, e.g. class announcements and reminders, school events, notifications, information regarding home learning, notification of changes to routines and one-one contact for general messages. Please note, messaging through Dojo should not be used for sensitive issues and parents should not report child absences through Dojo.

ClassDojo is the easiest way for you to see how your child is doing in school. We encourage all our families to join us and sign up to keep up-to-date with 'goings-on' in school. It is downloadable as an app on iOS and Android devices and also accessible from a computer at: www.classdojo.com

School Website

The school website is: www.staining.lancs.sch.uk. Reception have their own page on our school website which contains copies of relevant documents including termly reading record and home learning log and our EYFS curriculum document.



Uniform and Clothing

Formal Uniform

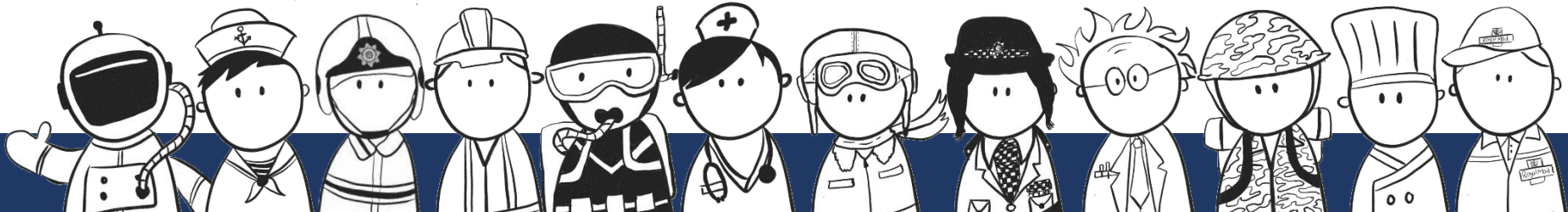
We want the children who come to Staining Primary School to feel that they belong and have a real sense of pride in our school. Our school uniform is listed below:

- White shirt (long or short sleeved)
- Dark grey trousers or shorts
- Royal/ navy tartan pinafore/skirt or grey trousers
- Navy gingham summer dress (when it's nice weather)
- Small, school coloured hair bobbles/ bands
- Navy and pale blue contrast jumper or cardigan
- Royal blue plain tie
- White or grey long or short socks or grey tights
- Black shoes (or smart closed-toe sandals with a front and back when the weather is warm – in school colours)
- Optional: Navy blazer

Please ensure all items of school uniform are clearly labelled with your child's name.

School jumpers, cardigans, ties, tartan dresses, tartan skirts and blazers can be purchased from 1st class kids in Blackpool or online through their shop.

Trousers, shorts, shirts, pumps, trainers, socks, shoes and summer dresses can all be purchased from any supermarket/ shop.



Uniform and Clothing

PE Kit

The PE kit (shorts and t-shirt) are part of our compulsory uniform but tracksuit tops and trousers should be worn when the weather turns colder. If you do wish for your child to wear a tracksuit in the winter, they can choose from the school tracksuit or their own navy blue/ black one.

Items of Kit:

- Navy and light blue school airtex top
- Navy school airtex shorts
- Optional: navy/ black tracksuit (school or own)
- Black pumps
- Trainers (please note that trainers will need to be in school daily so your child can run the 'daily mile')
- If your child wears tights for school, they will also need a pair of socks to wear for their PE lesson.

PE kit is available to order from 1st Class Kids on Highfield Rd Blackpool.

Please ensure all items of P.E kit are clearly labelled with your child's name.

Children are required to come to school in their sports kit and trainers on their allocated P.E day(s). For Reception, this is a Wednesday.



Uniform and Clothing

Outdoor Clothing

We work inside and outside in all weathers so please ensure your child comes to school with suitable clothing as shown below;

Warmer Weather



Lightweight Jacket



Sun Hat

Wet Weather



Waterproof School Shoes



Waterproof Coat with Hood

Cold Weather



Warm Coat



Hat



Scarf



Gloves

Please ensure all items clothing are clearly labelled with your child's name.



Uniform and Clothing

Shoes and Footwear

We encourage children to run, climb and balance in our outside area so we need to make sure they are wearing the right shoes. Plain black, flat shoes are best - no strappy sandals or heels are allowed at any time.

Jewellery

In the interests of health and safety, jewellery other than ear studs should not be worn in school. Ear studs will need to be removed on P.E days.

Items of Faith

The importance to some pupils of the outward signs of faith is understood and recognised. Such items of clothing can be worn in a plain style and incorporating the school colours. Parents and carers are encouraged to discuss this with the Headteacher if they require any further clarification, therefore ensuring a mutually acceptable outcome is achieved.



EYFS and the Curriculum

Early Years Foundation Stage Framework

The children in Reception follow the Early Years Foundation Stage Framework and work towards the seven areas of Learning and Development. It is a very holistic approach to learning and places a strong emphasis on the individual child. It is a continuation from the active learning the children have been involved in at Nursery/Pre-School and culminates in the Foundation Stage Profile which assesses all areas of learning for your child. At the end of the year we will provide you with a written report based around the Foundation Stage Profile.

What Learning in EYFS Looks Like...

Play and Exploration is a fundamental within our Reception class. It means children are able to choose activities where they can engage with other children or adults or sometimes play alone. During these activities the children will learn by first-hand experiences; by actively 'doing' as well as through scaffolding and modelling by adults. We will provide them with sufficient space, both indoors and outdoors, time and choice with a range of activities. There will be a good variety of planned and prepared activities by the teachers, as well as allowing time for the children to initiate their own learning. Activities will be planned through discussion with the children around their current interests, as well as taking into account their learning styles and stages of development. Our environment will enable children to try things out and make sense of relationships, allowing all children to fulfil their potential



EYFS and the Curriculum

Reading

From the moment your child starts school they will be encouraged to develop a love of books. Staff plan for the development of your child's spoken language in many ways – through drama, singing, telling stories and rhymes. Your child will be bringing reading books home at the end of September. We will have a reading workshop to share ideas with you on how you can support your child in the early stages of becoming a confident reader.

Children will participate in daily active Phonics sessions to support with their early reading skills. Phonics is a method for teaching reading and writing to children in primary schools introduced by the Coalition government in 2011. Children link sounds (phonemes) and their written form (graphemes) in order to recognise and read words, using basic units of knowledge to “decode” new or unfamiliar words.

Writing

If you are helping your child to learn to write, please only use capital letters at the beginning of names. Once children have learnt capital letters, they can find it difficult to change into lower case. Correct letter formation is very important for the continuation into more formal writing. We will provide material to support with writing once your child starts school.



Checklist for Starting School

When I start in Reception, I will need...

- ★ A school uniform of which all items are clearly labelled with your child's name and class ☐
- ★ A school P.E kit ☐
- ★ A pair of trainers to be kept in school ☐
- ★ A practical mac/coat with a hood to be brought to school every day. ☐
- ★ A Staining School book bag ☐
- ★ A clearly labelled water bottle ☐
- ★ Completed emergency contact and permission form ☐
- ★ Spare underwear / clothes in case of toileting mis-haps (if you feel it necessary) in a clearly labelled draw-string bag that can be hung on peg. ☐

Please ensure every single item of personal property is labelled clearly with your child's name and their year group.



A Message from a Reception Parent

You've reached that milestone
Your child is starting school
Where routine is important
And listening to rules

My daughter started young
She was only 4 years old
I was anxious, happy and tearful
No matter how many times I was told

From starting in Reception
I could see the difference in her
She's made some wonderful memories
And really loves her teachers

She's made some lovely friends
Boys and girls and staff
She is part of the Staining School family now
Where everyone learns and laughs

The teachers make her feel welcome
They teach her right from wrong
You'll join in with the homework
And the learning of new songs

Your child's first day will be hard for you
But take it from me please
Your child is in the best of hands
They'll settle in with ease.

**Take a deep breath and know that Staining School is
amazing and the teachers are wonderful, professional
and approachable!**

